

Program Information

**2011 Ewha-KOICA
Master's Program in International Studies
(Women and Development)**

February, 2011 – June, 2012

Seoul, Korea

TABLE OF CONTENTS

PART I. KOICA & SCHOLARSHIP PROGRAM	1
PART II. PROGRAM OVERVIEW	6
PART III. HOW TO APPLY	7
1. APPLICATION ELIGIBILITY	7
2. APPLICATION PROCEDURE	8
3. SELECTION PROCESS	9
PART IV. PROGRAM CONTENTS	10
1. ACADEMIC SCHEDULE	10
2. ORIENTATION	10
3. CURRICULUM	12
4. EXTRA CURRICULAR ACTIVITIES	16
5. Ewha-KOICA SCHOLARSHIP PROGRAM REGULATIONS	17
PART V. TRAINING INSTITUTE	18
1. GENERAL INFORMATION	18
2. ACCOMMODATIONS	19
3. OTHER INFORMATION FOR INT'L STUDENTS	20
4. HEALTH CARE	36

Part I. KOICA & SCHOLARSHIP PROGRAM

The Korea International Cooperation Agency was founded as a government agency on April 1, 1991, to maximize the effectiveness of Korea's grant aid programs for developing countries by implementing the government's grant aid and technical cooperation programs.

In the past, development cooperation efforts were focused on meeting the Basic Human Needs (BHNs) of developing countries and on fostering their Human Resources Development (HRD).

However, the focus has now shifted to promoting sustainable development, strengthening partnerships with developing partners, and enhancing the local ownership of beneficiaries.

Additionally, global concerns such as the environment, poverty reduction, gender mainstreaming, and population have gained significant importance among donor countries.

Due to the continuously changing trends in development assistance efforts and practices, KOICA is striving to adapt to these changes by using its limited financial resources effectively on areas where Korea has a comparative advantage.

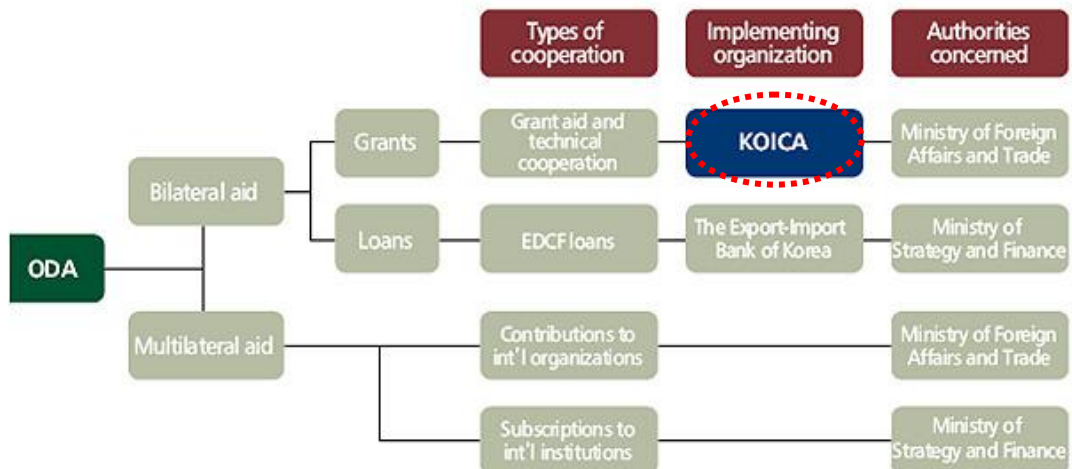
In particular, since Korea has the unique experience of developing from one of the poorest countries in the world to one of the most economically advanced, this knowhow is an invaluable asset that helps KOICA to efficiently support the sustainable socio-economic development of its partner countries.

Korea's ODA Framework

Korea's ODA consists of three types of aid : Bilateral Grants, Bilateral Loans, and Multilateral assistance.

Bilateral Grant aid comprises of technical cooperation and various types of transfers (made in cash, goods or services) with no obligation for repayment implemented by KOICA under the Ministry of Foreign Affairs and Trade. Bilateral Loans are provided on concessional terms under the name of the EDCF(Economic Cooperation Development Fund) implemented by The Export-Import Bank of Korea under the Ministry of Strategy and Finance.

Multilateral assistance is delivered either as financial subscriptions or contributions to international organizations.



Korea's Experience and KOICA's Program for Human Resources Development

Human Resource Development (HRD) has been the most important factor in Korea's escape from the vicious cycle of poverty and underdevelopment that had existed for many decades. With scant natural resources, HRD played a vital role in modern Korea's development. Clearly, Korea has emerged as an exemplary showcase of national development powered by human resources development.

From its own development experience, Korea came to fully recognize the significance of HRD, specifically in regards to Korea's collaboration with other developing countries. With much experience and know-how in HRD, Korea can contribute greatly to the international community by sharing its unique development experience with other nations.

Since its establishment in 1991, KOICA has supported a variety of international cooperation programs for HRD, mainly in project-type aid form focusing on education and vocational training with a focus in building a foundation for HRD.

The training and expertise-sharing programs help developing countries build administrative and technical expertise in both the public and the industrial sectors. In order to share experience and knowledge at the grass roots level, KOICA dispatches Korea Overseas Volunteers (KOV's) to render services in the fields of education, regional development, computer science, healthcare and nursing. Approximately 3,776 KOV's have been dispatched to thus far.

The training program provides opportunities to individuals from developing countries to gain first-hand knowledge of Korea's development. The purpose of this program is to enable the trainees to apply what they have learned for the development of their home country or local community. Between 1991 and 2009, KOICA offered 2,256 training courses to a total of 35,716 trainees from some 167 countries. There is a wide range of topics covered including administration, economic development, science and technology, information and communication technology, agriculture/ forestry/fishery, and healthcare. In order to meet the constantly changing needs of its partner countries, KOICA is always striving to renovate and improve their HRD programs.

Types of KOICA Training Programs

KOICA offers five major types of training programs:

1. Country Training Program
Tailored programs that are specifically designed for an individual partner country
2. Regular Training Program
Programs that are open to any interested partner countries
3. Special Training Program
Programs that are temporarily available owing to particular commitments of the Korean as well as partner governments
4. Joint Training Program
Programs conducted in partnership with international organizations and other agencies
5. Scholarship Program
Master's degree programs offered to individuals from partner countries

KOICA's Scholarship Program

With a mission to nurture talented students from developing countries, KOICA invites high-caliber students from developing countries and helps them gain professional and systematic knowledge that will play a key role in their home country's development.

To accomplish this mission, KOICA has been operating master's degree courses with leading Korean universities in the fields of economics, trade, women's empowerment, rural development, etc.

In particular, this program has significantly strengthened the relationships between Korea and the students' home countries. Students, who have been given an opportunity to see Korea's experience in poverty reduction and socio-economic development, will gain a deeper understanding of Korea and contribute to the future social, political and economic ties between the two nations.

From 1997 to 2009, the program has assisted a total of 771 students through 42 courses. In addition, as of 2010, 220 awardees are currently participating in the program at 10 different universities.

KOICA Scholarship Program is fully committed to the Millennium Development Goals (MDGs) and is determined to expand its efforts to nurture future talents from developing countries to promote their countries' sustainable economic growth and social development.

Part II. PROGRAM OVERVIEW

■ **Program Title:** Master's Program in International Studies
(Women Development)

■ **Duration:** 16 Months (February 2011 – June 2012)

■ **Objectives**

- To secure a pool of future international experts with professionalism and competence needed for international development cooperation.
- To educate women professionals equipped with solid understanding of development issues and practical skills to meet the global challenge.
- To share the Korean experience and knowledge with other developing countries, which will enhance their ability to further their expertise in the areas of economic development and quality of life.
- To empower women leaders to enhance the intellectual mindset and talent of their home country's human resource capabilities.

■ **Training Institution**

- Graduate School of International Studies, Ewha Womans University
(<http://gsis.ewha.ac.kr>)
- Ewha-KOICA Webpage (<http://gsis.ewha.ac.kr/ekoica>)

■ **Number of Participants:** 30

■ **Language:** English fluency that requires no translation

Part III. HOW TO APPLY

1. APPLICATION ELIGIBILITY

Candidates should be female applicants:

- From the cooperating country of KOICA
- Be government official or employee in public sector with a Bachelor's Degree or higher
**Private sector employees are not eligible. However, if the applicant works in a development non-governmental organization (NGO) or UN-associated organization, she can apply on the condition that she obtains a recommendation from the government ministry which covers the organization.*
- Nominated by her Government
- Sufficient command of both spoken & written English to take classes conducted entirely in English
- In good health, both physically and mentally, to complete the program (Pregnancy is regarded as a disqualifying condition for participating in this program)
- Not participated in a KOICA program or should be 5 years out of participation in a KOICA training program

2. APPLICATION PROCEDURE

a. Application & Registration Timetable*

Procedure	Dates
Closing Date for Application	December 6, 2010
Document Review & Phone Interview	December 13 – December 23, 2010
Final Admissions Decision	January 4, 2011
Arrival in Korea & KOICA Orientation	February 7, 2011

* Please note that dates are subject to change.

b. Checklist of Documents to Be Submitted

All of the following application materials should be sent to the regional KOICA office (if available) or the relevant government office. Please do not send the materials to Ewha Womans University.

1. KOICA application form
2. Completed Application Form of Ewha GSIS
(Available from the Ewha-KOICA homepage :
<http://gsis.ewha.ac.kr/ekoica>)
3. Statement of Purpose (250-500 words in English, typed)
4. One letter of recommendation from a professor or an expert in a field related to International Development
5. One letter of recommendation from the present working organization
6. Photocopied college diplomas or proof of prospective graduation
7. Official undergraduate academic transcript

Transfer students must submit official transcripts from all colleges or university-level educational institutions they attended.

8. English-proficiency test result from one of the following: TOEFL or IELTS (if applicable)
 - The most recent scores are preferred, and must be less than two years from the application deadline.
 - Exemption: International students whose native language is English or who have received a BA or MA from an accredited English-speaking institution
 9. Certificate of Employment (if applicable)
 10. Copy of national ID card or passport
 11. Two passport-size photos
- ※ All documents (Diplomas, Transcripts, Statement of Purpose, Recommendation Letters, etc.) **must be original in English.**

3. SELECTION PROCESS

a. Admission Decision Procedure

- ◆ Round 1 : Evaluation of Application Package
- ◆ Round 2 : Interview by phone and written essay exam

**Note: An interview will be conducted only for those applicants who have passed Round 1. The phone interview will be conducted in English. The applicants' educational goals and leadership potential will be also evaluated. The written essay exam will be conducted at the KOICA overseas office.*

Part IV. PROGRAM CONTENTS

1. ACADEMIC SCHEDULE

Date	Contents	Place
Dec 6, 2010	Application Deadline	Home Country
Feb 7-10, 2011	Arrival, Medical Checkup KOICA & Ewha Orientation	KOICA
Feb 14 – 26, 2011	Pre-requisite Course	Ewha GSIS
Mar 2 – Jun 17, 2011	Spring Semester (1st semester)	Ewha GSIS
Jun 27 –Aug 31, 2011	Summer Term (2nd semester)	Ewha GSIS
Sep 1 – Dec 16, 2011	Fall Semester (3rd semester)	Ewha GSIS
Mid Dec, 2011	Thesis Seminar	Ewha GSIS
Mar 2 – Jun 15, 2012	Thesis Semester (4th semester)	Ewha GSIS
Jun 15, 2012	Departure	Ewha GSIS

*The above schedule is subject to change.

**A detailed Program Schedule will be provided upon arrival.

2. ORIENTATION (KOICA)

When you first arrive, there will be an orientation for 2-3 days for KOICA’s Scholarship Program at the ICC of KOICA. The orientation aims to provide participants with useful information on the program as well as general information on living in Korea that you will need during the program. Usually, the orientation is composed of three parts; KOICA’s welcoming session, a Seoul City Excursion and a medical checkup. The order of each part is subject to change.

a. KOICA's welcoming session

In the first part of the orientation, you will have a welcoming session which includes KOICA's welcoming reception, an introduction of KOICA and a course outline. Through this session, you can have an overview of the Scholarship Program. Lectures about Korean culture and basic Korean language as well as general information regarding daily life in Korea will also be delivered in this session.

b. Seoul city excursion

KOICA provides a Seoul City Excursion to every participant of the training program. Seoul is the capital of Korea. You will have a chance to visit the cultural heritage and downtown area of Seoul. The excursion will help you get accustomed to the new culture and surroundings in Korea.

c. Medical Checkup

KOICA will implement a medical checkup after each participant's arrival in Korea to assure their health condition. After the medical checkup, KOICA will officially accept each participant as a KOICA trainee for the program. If any case which may hamper the scholarship in Korea is found in the medical checkup, the participant will be required to return home. The status as the participant for KOICA's Scholarship Program will be finalized and the acceptance for the program will be confirmed after the medical checkup.

3. CURRICULUM

a. Curriculum and Credits

Classification	Courses	Hours per week	Credits
1. Prerequisite Courses	IS101 Economic Analysis		P/NP
	IS102 Political Analysis		
	IS103 Statistical Analysis		
2. Required Courses	IS201 International Negotiation and Strategy: Theory and Practice	3	3
	IS203 Research Methods and Fieldwork	3	3
3. Professional Training Courses	IS301 Distinguished Global Lecture Series (Two semester: 1 credit/ semester)		2
	IS308 Practicum in Korean Society and Culture		1
	IS311 Academic Writing and Presentation		1
	IS312 Professional Leadership Workshop		1
	IS313 Writing Intensive: Minimum 1 course		0
4. Concentration Requirements	IS309 Practicum in Women and Development	3	3
	IS407 Globalization and Development	3	3
	IS514 International Political Economy	3	3
	IS644 ODA: Theory and Practice	3	3
	IS401 International Economic Relations		
	IS403 International Trade Policy		
	IS503 Korean Economy		
	IS516 ODA Management and Evaluation		
5. Concentration Electives	IS529 Special Topics in Development (A)	Minimum 6	Minimum 6
	IS530 Special Topics in Development (B)		
	IS543 Regional Integration and Cooperation		
	IS544 Trade and Development		
	IS545 Peace and Cooperation with North Korea		
	IS614 NGOs and International Cooperation		
	IS618 Cross-Cultural Communications		
	IS622 Gender and Development		

		IS641 Corporate Governance and Social Responsibility		
		IS645 Ecological Sustainable Development		
		IS646 Finance and Development		
		IS647 International Human Rights		
		IS648 Poverty and Development		
		IS670 The Political Economy of Economic Reform in Developing Countries		
		IS671 Human Security and Development		
		IS672 Peace-Building and Development in Conflict Areas		
		IS721 Political Economy of East Asia		
		IS744 International Organization		
		IS923 Advanced Topics in Development Cooperation I		
		IS924 Advanced Topics in Development Cooperation II		
6. 21st Century Program (Select one field)	International Conflict Management	IS519 Principles of International Law	Optional (Minimum 9)	Optional (Minimum 9)
		IS618 Cross-Cultural Communications		
		IS643 Labor Relations		
		IS651 Special Topics in Int'l Conflict Management		
		IS652 Special Topics in International Legal Studies		
		IS661 Professional Workshop for Int'l Negotiation Educators		
		IS744 International Organizations		
		IS925 Advanced Topics in Int'l Conflict Management		
	International Public Relations	IS611 International Public Relations		
		IS613 Comparative Society and Culture		
		IS615 Global Marketing and Advertising Strategies		
		IS616 Special Topics on International Public Relations		
		IS618 Cross-Cultural Communications		
		IS641 Corporate Governance and Social Responsibility		
		IS662 International Journalism and Mass Communication		
	International Legal Studies	IS519 Principles of International Law		
		IS522 International Business Law		
		IS641 Corporate Governance and Social Responsibility		

		IS647 International Human Rights				
		IS652 Special Topics in International Legal Studies				
		IS926 Advanced Topics in International Trade Law				
	Women and HRD	IS621 Women and International Cooperation				
		IS622 Gender and Development				
		IS623 Women and Human Rights				
		IS624 Global Women Leadership and HRD				
		IS625 Special Topics in Women and Int'l Cooperation				
		IS643 Labor Relations				
7. International Organizations and Area Studies	International Organizations	IS519 Principles of International Law				
		IS614 NGOs and International Cooperation				
		IS652 Special Topics in International Legal Studies				
		IS744 International Organizations				
	Area Studies	IS503 Korean Economy				
		IS541 East Asian Economies				
		IS543 Regional Integration and Cooperation				
		IS545 Peace and Cooperation with North Korea				
		IS649 International Relations of Northeast Asia				
		IS664 Special Topics in Area Studies				
		IS705 US Foreign Policy				
		IS721 Political Economy of East Asia				
		IS731 Korean Politics				
		IS732 Korean History and Culture				
		KS502 Korean Society and Its Culture				
		KS503 Value Systems of Korean People				
		KS506 Comparative Studies of the East Asia Cultures				
		8. Thesis		Z0001 Thesis Research		3 (P/NP)
		Total Credits Required for Graduation				41

* The above curriculum is subject to change.

b. Credits Completed per Semester

- Spring Semester: 1st semester (03/02/2010- 06/17/2010): 14 credits
- Summer Semester: 2nd semester (06/18/2010-08/31/2010): 10 credits
- Fall Semester: 3rd semester (09/01/2010-12/19/2010): 14 credits
- Thesis Semester: 4th semester (03/02/2011-06/15/2011): 3 credits

c. Requirements for Graduation

Course Classification	Credit	Course Classification	Credit	Course Classification	Credit
Prerequisite Courses	P/NP	Required Courses	6	Professional Training Courses	5
Concentration Requirements	12	Concentration Electives	6	Others	9
Thesis Research	3				

* The above requirements are subject to change.

It is compulsory for students enrolled in the Ewha-KOICA Master's Program in International Studies :

- to complete their thesis research in order to obtain a diploma
- to take Korean and computer courses for graduation

d. Required Grade Point Average (GPA)

- Students with a GPA below 2.50 for two consecutive semesters will be automatically expelled from the program.
- Minimum cumulative GPA for graduation within the 16 months of resident (Total: 4 semesters) is B0 (3.0/4.3). Students with a GPA below 3.0 will be disqualified from acquiring a diploma or a graduation certificate.
- Minimum grade in functional major requirement courses: B0 for each course

- Minimum grade for other courses: C-

4. EXTRACURRICULAR ACTIVITIES

a. Field Trips

1) Practicum in Korean Society and Culture

- Cultural Sites: Examples – Gyeongju (Bulguksa, Sukgulam, etc), Ganghwa County(Chojjin, Bomunsa, Mt. Mani), House of Sharing, Korean Folk Village, Hwaseong Fortress, DMZ, Dae Jang Geum Theme Park etc.

2) Practicum in Women and Development

- Industrial Sites: Examples - Samsung Electronics, POSCO, Hyundai Motor, Hyundai Shipbuilding, SK Energy, Hankook Chinaware, Lotte SamKang, and Gumi GongDan, LG Electronics etc.
- Memorial Site: Example - UN Memorial Cemetery in Korea, Independence Memorial Hall of Korea, The Warm Memorial of Korea

b. Events

- Welcoming Ceremony and Orientation
- GSIS Open House (every semester)
- International Cultural Festival
 - Country Exhibition
 - Talent Show
- Workshops, Forums and Conferences
- Homecoming Day
- Farewell Ceremony

5. Ewha-KOICA SCHOLARSHIP PROGRAM REGULATIONS

a. Ewha GSIS Regulations

- Ewha-KOICA students must abide by the Honor Code adopted by Ewha GSIS and submit the completed form upon agreement.
- Students are requested to commit themselves to the program neither being engaged in plagiarism nor giving or receiving aid during exams.
- Disciplinary measures will be executed by the faculty members and the Dean of GSIS on a case-by-case basis. However, multiple violations will result in expulsion from the program.

b. Ewha Womans University Dormitory regulations (Graduate Students Dormitory)

- Ewha has very strict dormitory regulations and all students must abide by them
- All Ewha-KOICA students must reside in the dormitory and living off-campus is prohibited.
- A student who violates dormitory regulations will be evicted from the dormitory and she must return to her country immediately.
- Cooking within the premises of the dormitory is prohibited due to safety reasons. However, the Microwave could be used.

Part V. TRAINING INSTITUTE

1. GENERAL INFORMATION



The Graduate School of International Studies (GSIS) at Ewha Womans University was established in March 1997 to spearhead the effort to produce the finest global leaders for the 21st century. The Korean government awarded Ewha with a five-year grant to establish a GSIS that would provide the intellectual breadth and professional development necessary to successfully launch women into the international arena.

Ewha GSIS has a winning program and a proven track record of producing global leaders. Ewha is the largest women's university in the world. In addition, the Korean Ministry of Education and Human Resources Development ranks Ewha GSIS as the number one out of all Korean GSIS programs.

In 2007, the Ministry of Education and Human Resources Development granted Ewha GSIS to develop a specialized program on Development Cooperation.

The student body of Ewha GSIS is truly global. In addition to students from Korea, the students also come from the United States, Argentina, Australia, Canada, China, Nigeria, Pakistan, the Philippines, and Vietnam to name a few. Thus, students not only learn in the classroom about topics such as

multiculturalism, but actually learn to “live” and “cooperate” within a multicultural environment. Due to the small class size of Ewha GSIS, and high faculty to student ratio, students form a close working relationship with the faculty and find opportunities to participate in the faculty’s research projects as Research Assistants (RAs), or learn teaching skills by working as Teaching Assistants (TAs)

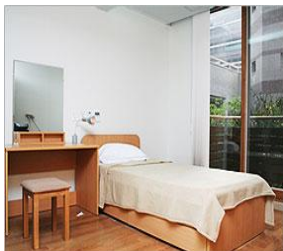
Ewha GSIS is the hub for training 21st century global leaders and is the strategic choice for women seeking the best education, the most dynamic atmosphere, and the greatest competitive edge any program can offer. In short, Ewha GSIS is the only program of its kind in Korea to offer exceptional leadership opportunities and courses specifically geared for women leaders.

2. ACCOMMODATION



To meet the needs of the global era and to foster women leaders who will lead 'Initiative Ewha', this dormitory was established in September 2006, with high-tech facilities. On 16,597 gross area, the dormitory consists of two 9-story buildings(7-story buildings with 2-story basement). There are 53 single rooms and 78 twin rooms for students, and 22 rooms for professors or researchers. In total, dormitory can accommodate 437 residents.

Each room is equipped with bathroom and internet service. And there are whole facilities to help your study and life-fitness room, PC room(online video chatting available), seminar room, reading room, prayer room, lounge, convenience store for new residents, birthday party, monthly prayer meeting, and so on.



In order to meet Ewha's educational goals, which are Informationalization, Globalization, and Specialization, this dormitory is to serve as a place of intelligence community, where Ewha graduate students, exchange students, language center students, professors, and researchers live together. Therefore, the dormitory will play an important role in promoting intercultural communication and fostering women leaders.

3. OTHER INFORMATION FOR INT'L STUDENTS

a. Student Activities

1) PEACE (Professional Ewhaians At Cultural Exchange) BUDDY

Making a new friend in a different country may seem difficult at first. The OGA offers our PEACE "buddy" program to help your initial contact with Korean students and adjustment to new environments.

The buddies do numerous activities for the international students, including picking you up at the airport when you arrive, helping you get acquainted to the Ewha campus and nearby Shinchon area, taking you to student hang-out places and events, giving you academic help, and arranging cultural trips. By interacting with the students, you will be able to expand your social network in Korea to other areas beyond the school and fully take advantage of what Ewha and Korea can offer. Before you come to Ewha, selected buddies will contact you via e-mail.

Email: ewhapeacebuddy@gmail.com

URL: <http://www.ewhapeacebuddy.com>

2) ISF (International Student Fellowship)

ISF has been established to help the life of international students studying in Korea regardless of their nationality, race, religion, and sex. Throughout the semester, you will be invited to many programs and parties that are hosted by ISF such as dinner parties, bazaars, and so on.

b. Facilities

1) The Centennial Library

The Centennial Library is acclaimed to be one of the most renowned libraries in Korea. The seven-story building has a capacity of 4,000 seats and 1.3 million volumes, 9,800 periodicals, a digital library and a computerized catalogue system that can be accessed on-line at <http://lib.Ewha.ac.kr>. Students can borrow and reserve library books online as well. You may login to the Library website with your student ID and the initial Password(date of birth). Only checked-out books can leave the library. If violated, you will not be allowed to borrow books for six months.

- Opening Hours: Weekdays 09:00- 21:00/ Saturdays 09:00- 15:00
- Closed on Sundays and Public Holidays
- Reading Rooms: 24 hours
(Entrance and exit restricted from 00:00~05:00)
- Facilities
 - Computer Lab: 1st floor
 - Use of Personal Laptops:
 - You can use wired internet and laptop usable tables in the laptop room on the 1st and 5th floor of the library.
 - To use wireless internet, you need wireless LAN card, which you can

borrow at Reference desk on the second floor of the central library.

- To use wireless internet, you need to install 'Nespot' program, and register your MAC ID at the GSIS office.

- To install the 'Nespot' program, click <http://portal.Ewha.ac.kr/>, and then go to 'HELP DESK' on the top right. Under the 'HELP DESK,' click 'FTP Service' in the middle. You can find 'nespot' category on the left column. You can download 'KT Nespot CM'.

- **Laptop Rental**

- At the reference desk on the second floor of the central library, users may borrow laptops and wireless LAN card to search for materials in and out of the library.

- Laptops can be used on the 2nd to 5th floors.

- Wireless LAN card are rented for personal laptops and can be used inside the library.

- Service hours: 09:00-18:30 for weekdays, 09:00-14:30 for Saturdays.

- Rental request can only be submitted 30 minutes prior to closing time.

If you fail to return the equipment on time, you will lose your borrowing privileges for the equipment in the future.

- Rental hours: 2 hours per time (rental hours may be extended if there is no one waiting)

- Help Desk (02-3277-3131, infoserv@ewha.ac.kr)

- **Printer**

- Location: Computer Lab (1st floor, 4 printers), Information Room (2nd floor, 4 printers)

- You have to use a printer card (Korean Won [KRW] 5,000) to print. KRW 50 per page.

- A printer card is available at the store located in the basement of the library.

- **Photocopiers**

- Location: Copy Room in the basement, and 2nd to 5th floors
- You need to use a copy card (KRW 5,000) to copy. KRW 20 per page.
- A copy card is available at the store located in the basement of the library or copy room on the 4th floor.

- **Scanner**

- Location: Computer Lab (1st floor)
- Free of charge

2) Cafeterias and Snack Bars

There are four different cafeterias on campus. They all serve different menus and the prices differ slightly from one another. Prices normally range from 1,000 won to 3,000 won per person but may further vary depending on the menu of the day.

- **Student Cafeteria:** Located in the Human Ecology Building(생활관, #46 on the campus map), this cafeteria offers various kinds of menus to the students. This is the school's main cafeteria, offering 1,500 seats for students.
- **Dormitory Cafeteria:** Located in the dormitory, this particular cafeteria gives you a choice between Korean style and western style food. The food tickets can be purchased at the kiosk nearby.
- **Helen Hall Cafeteria:** Located in the Helen Hall(헬렌관, #14 on the campus map), you will find it right across the main entrance of the Centennial Library.
- **Aremttele:** Located outside the Helen Hall, this campus café serves soft beverages and snacks such as donuts, pastas, and sandwiches.
- **Dr. Robin:** Located on the 4th basement level of ECC, this campus café serves soft beverages and snacks such as donuts, pastas, and

sandwiches.

- **Our Home:** Located on the 4th basement level of ECC, this campus foodcourt serves a various sort of food.
- **Cathay Ho:** Located on the 4th basement level of ECC, this campus Chinese restaurant serves soft beverages and snacks such as donuts, pastas, and sandwiches.

3) Computer Lab

Ewha has many computer labs that are available for your needs. In Korea, IBM is more commonly used than Macintosh.(Business hours: Weekdays 09:00 – 21:00)

Building	Computer Lab	Campus Map
International Education Building	9F	52
Hak-Kwan	Rm. 401	31
Science Center Building (Block B)	Rm. 254, Rm. 556	26
Engineering Hall	Rm. 125	19
Human Ecology Building /Alumnae Building	Rm. 408, 2F	46
Ewha-POSCO Hall	Rm. B154	29
Helen Hall	Rm. 303	14
Music Building	Rm. 329	12
Art & Design Building	Rm. 417	8
Physical Education Building	Rm. 202	5
Student Union Building	Rm. 301, Rm. 441	32
Education Building	Rm. 207	22
Centennial Library	1F, 2F	13
Int'l House & Graduate Student Dormitory	1F & B2F	55

- **IT One-Stop Service Center:** Located in ECC(Rm #B205), the IT One-Stop Service Center offers technical services and advice, and students may borrow lap tops for a daily use.
- **Service & Advice:** 09:00 to 17:00, Mon-Fri (Lunch Hour: 12:00-13:00)
- **Laptop Rental:** 07:30 to 19:00, Mon-Fri (Lunch Hour: 12:00-13:00)

- **Print Cards:** You can purchase a print card (5,000 won) at a kiosk in the Library, POSCO Hall, Student Union Building, other stores on campus and IEB, etc. You may purchase Print Cards for the use of the IEB computer lab, on the 9th floor of the International Education Building, from the GSIS office(#1104).
- **Photocopier:** To use a photocopier, you need to buy a copy card (5,000 won) at a kiosk. To operate the copier, put the card into a slot, and then press the manual start button.

4) School Supplies

- **Location:** B1 of Student Union.(#31 on the campus map)
- **What you can buy:** stationary, toiletries, snacks
- **Business hours**
 - Weekdays: 09:00-19:00
 - Saturdays: 09:00-14:00

5) Post Office

- **Location:** B1 level of the Alumnae Center (#45 on the campus map)
- **Service:** General mailing services including mail, parcel, registration, domestic/international EMS, and certain banking services.
- **Business Hours:** Weekdays 9:00-18:00
- For more information, visit <http://www.koreapost.go.kr>.

6) Sports Facilities

There are various sports facilities on Ewha campus, which students can use for free or at a low fee.

■ Indoor Swimming Pool



Located in the basement of the Alumnae Building (#42 on the campus map), the pool is used for both class and leisure activities. Personal and group lessons are available at a low fee. Anyone can swim in the pool by paying the admission fee of 5,000won/1 entry (30,000KRW/12 entries). It is open from 07:00 to 18:00 For more information about lessons and monthly schedules, please contact (02) 3277-2555.

■ Fitness Room (Yoga, Jazz, Sports dance, etc.)

It is located in the basement of the Student Union Building (#38 on the campus map). In the fitness room, yoga, and various types of dances are taught and practiced. Summer School students can sign up for programs at the fitness room during mid-late June. For detailed information on lessons and monthly schedule, please contact (02) 3277-2938.

■ Tennis Court (#60 on campus map)

You do not have to pay to use the tennis courts, but prior reservation is required. The courts are open to the public from 06:30 to 19:00 Monday through Saturday and only until 12:00(noon) on Sundays.



Tennis lessons are available at a low price. For more information on lessons and monthly schedule, please contact (02) 3277-2553, 3714.

■ Squash

There are two squash courts in the second basement level of the Student Union Building (#31 on the campus map). For detailed information on

lessons and monthly schedule, contact (02) 3277-2938.

c. ECC(Ewha Campus Center) Facilities

1) Dr. Robbin

- Location: ECC Gate3, turn left (B401)
- Breakfast is available after 11:30
- They have muffins, cookies, cakes, sandwiches, pizza, pasta, Asian dishes and espresso.
- Contact: (02)3277-4981
- Business hours : 08:00 - 21:00



2) Shinhan Bank



Bank



ATM

- Location: In front of the Gate3 ECC (B405)
- Contact: (02)3277-4899
- Business hours : 09:00-16:30
- Money transfer from overseas can be made freely up to US\$20,000 per day. For the exceeding amount, the bank has to report the activity to the government. Also, you need to consult your home bank first if you intend to use their cash (debit) card in Korea.

Considering the easy access around campus, you may find it convenient to open an account with Shinhan Bank. There are several ATM machines

managed by Shinhan Bank on campus. There are also many Korean and international banks off-campus and downtown Seoul. GLOBAL ATM is available at the on-campus Shinhan Bank, but credit card cash advance transactions cannot be made here, only debit cards may be used. For credit card cash advance and debit cards, use the ATM machine in the lobby of the International Education Building. For your information, service fees are charged when you use ATMs of different banks, or if you use the ATM outside of bank business hours.

Foreign currency and traveler's checks can be exchanged into Korean currency (won) in banks at the airport, foreign exchange banks, and other authorized money exchange places including the on-campus Shinhan Bank.

3) Linko(School Supplies)

- Location: ECC Gate3, turn right (B408)
- Delivery Service (Only for purchase over 30,000KRW)
- Contact: (02)3277-4904
- Business hours : 09:00-20:00 (weekdays)
10:00-20:00 (Saturday)
Sunday & holiday (closed)



4) KYOBO Bookstore

- Location: ECC Gate3, turn right (B409)
- Contact: (02)3277-4782
- Business hours : 8:30-19:00 (weekdays)
10:00 -17:00 (Saturday)
Sunday & holiday (closed)
- All kinds of books are available

5) Richmont (Bakery)

- Location: ECC Gate3, turn right (B406)
- Contact: (02)3277-4862



- Business hours: 08:00 -21:00 (weekdays)
08:00- 20:00 (weekends)
- They have sandwiches, many kinds of pastries and coffee.

6) Fitness Center

- Location: ECC Gate 4, turn right (422)
- Programs: Health, GX class. They will provide free sports clothes and towel, but you have to return them after usage.
- Contact: (02)3277-2559
- Business hours: (Mar-Nov) 06:30 - 21:30 (Mon-Fri) 09:00 - 17:00 (Sat)
(Dec-Feb) 07:00 - 20:30 (Mon-Fri) 09:00 - 17:00 (Sat)
Sunday & Holiday (Closed)

GX Program	Bosu Exercise	Body Shaping	Total Body Exercise	Yoga-lates
	I.F.F.E	Sling Exercise	Latin Dance (In English)	

□ Fees:

One Month			Fees for student
Health			40000 won
GX Class	twice/week	Mon, Wed (A/P)	40000 won
		Tue, Thu (A/P)	
	4 times/week	Mon-Thu (A/P)	60000 won
Health+ GX Class	twice/week	Mon, Wed (A/P)	60000 won
		Tue, Thu (A/P)	
	4 times/week	Mon-Thu (A/P)	70000 won



7) GS25 Convenience Store

- Location: ECC Gate 4 (420)
- Sale: Drinks, food, other commodities
- Contact: (02)3277-4989
- Business hours: 07:00~23:00



8) Optical Shop

- Location: ECC (B418)
- Services: Glasses, Contact lenses
- Contact: (02)3277-4903
- Business hours:
 - 09:00~19:30 (Mon-Fri)
 - 09:00~18:00 (Sat)
 - Sunday & Holiday (closed)



9) Ewha POD Center

- Location: ECC Gate 4, turn left (B419)
- Services: Copy, Print, Fax, Scan
- Contact: (02)3277-4988
- Business hours: 09:00-21:00 (Mon-Fri)
09:00-15:00 (Sat)



10) Starbucks Coffee



- Location: ECC Gate 4, turn left till the end (B415)
- Services: drinks, cookies, cakes
- Business hours: 08:00-22:00 (Mon-Fri)
08:00-19:00 (Sat-Sun)

11) IT Service Center

- Location: ECC Gate 9 and turn left (B205)
- Services: wireless access, laptop rental
- Business hours: 09:00-17:00 (Mon-Fri)
- Contact: (02)3277-4777

12) Computer Lab

- Location: ECC Gate 7 and turn left (B204)
- 60 PCs, Printer, Scanner, Copy machine
- Business hours: 09:00~21:00



13) Ewha Souvenir



- Location: ECC Gate 3, turn left (inside KYOBO Bookstore, B409)
- Paper, stationary, clothes, needlework, metal, glass, ceramic, woodness
- Business hours:
 - 10:00-19:00 (weekdays)
 - 10:00-15:00 (Sat)
- Homepage: www.coop.ewha.ac.kr
- Contact: 02-3277-3706

14) Art House Momo

- Location: ECC B4
- Contact: 02-363-5333

d. Other Campus Facilities

The **Student Union Building** has computer lab, convenience store, school supplies store, Ewha merchandise store, cosmetics shop, bakery, coffee shop, and more.

The recreational hall on the first basement level of the Student Union Hall offers classes in aerobics, dance, yoga, squash and jazz dance at a student bargain cost.

The **Ewha-POSCO Hall** has a kiosk, stationary store, snack bar and computer labs.

e. Religious Services

There is a Christian worship service (in Korean) on Sundays from 11:00 at the University Chapel (#52 on the campus map).

1) Buddhism

Seoul International Zen Center, Hwa Gye Sah

<contact information>

- Seoul International Zen Center main office:
- Telephone: (02) 900-4326
- Electronic mail : seoulzen@yahoo.com

2) Catholic

The International Catholic Parish of St. Francis

<contact information>

Pastor	Father Giancarlo Faldani
St. Francis Chapel Address	707, Hannam-Dong Yongsan - Ku 140 212, Seoul, South Korea
Telephone	(02) 793-2070
Fax	(02) 798-7442
Internet Address	church.catholic.or.kr/international/default.html

3) Christianity

Recommended Churches with English worship service:

- Sarang Community Church: <http://nhm.sarang.org>
- Onnuri Church: <http://www.onnuri.or.kr/oem>

- Full Gospel Church: <http://temple.fgtv.org/fgem>
- Youngnak Church: <http://www.youngnak.net>

4) Islam

Korea Muslim Federation

<contact information>

- TEL : (02) 793-6908 or (02) 793-3156
- FAX : (02) 798-9782
- Homepage : <http://www.koreaislam.org>

f. Emergency Contact Information

1) Emergency Safety Guideline



Please abide by the following instructions:

- Keep in close contact with the GSIS
 - ① Update your contact information (cell-phone number)
 - ② Personal Counseling: Consult with the GSIS any difficulty you may be facing due to cultural differences
 - ③ Alert the GSIS whenever you plan to travel away from Seoul, and whenever you return.
- Contact your families and friends at home who may be concerned or worried about you.
- Register at your embassy/consulate in Korea
Phone, fax or email the nearest Consulate or Embassy and let them know of your presence here in Korea.
- Take the emergency card with you wherever you go, it will come in handy in emergencies.
- Avoid political demonstrations, large crowds and gatherings. Please

be careful when participating in anti-war or other political demonstrations. You are recommended against participating in such activities.

■ Avoid interacting with unknown groups

Please think again when accepting an invitation from an unknown group of people. They might introduce themselves as Taekwondo, or Korean cultural group when they are in fact members of a cult.

■ GSIS Contact Information in case of emergencies

Eun Mie Lim (02)3277-3332

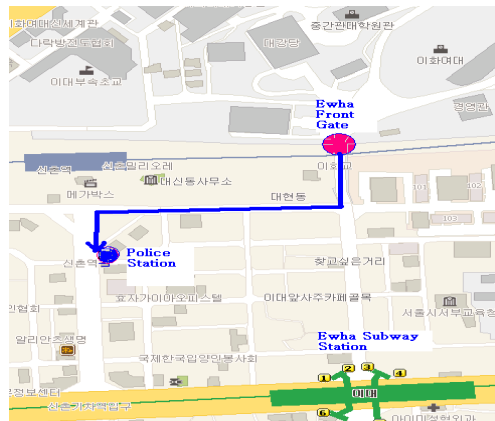
Jiyoung Kim (02)3277-6796

Joonhee Kim (02)3277-3655

2) Emergency Contact Information

■ **Police: 112**

- The nearest Police Station:
Seodaemun-gu Police Station: (02)363-0469
- Location: Take a right from the Ewha Front Gate. Go down to Milliore. Across the Milliore, the Police station is on your left side.



■ **Ambulance for Emergency: 119**

■ **Hospital**

- The nearest hospital: Shinchon Severance Hospital
- Location: Across the Ewha back gate
- For appointment: (02) 2228-5800

- For Emergency Service: 010-9948-0982

■ Important Telephone Numbers

- Emergency (They do not require an area code)
 - ✓ Police 112
 - ✓ Fire and Ambulance 119
 - ✓ Medical Emergency 1339
- Operator Assistance
 - ✓ Directory Assistance (local) 114
 - ✓ Directory Assistance (long distance) (city code) + 114
 - ✓ International Dialing Information 00794
 - ✓ International Operator 00799

4. HEALTH CARE

a. Campus Health Care Services

The University Health Service Center is located on the B1 level of the Alumnae Building.

- Office Hours: Mon.-Fri. 09:00 -17:00 (Lunch Hour: 12:00-13:00)
- Examination, prescription and medicine for simple illnesses such as cold or indigestion will be able to be covered by paying KRW 3,000 per treatment directly to the University Health Service Center.
- The student doctor who has medical certificate resides in dormitory. For your emergency, you can contact her.



- For your consistent illness or serious sickness, we would recommend to go Ewha Womans Mockdong Hospital(Contact:02-2650-5114/ <http://www.eumc.co.kr/mokdong>)

b. Off-Campus Health Care Services

1) Severance Hospital (Yonsei University College of Medicine)

- Weekdays: mornings 10:00~12:00
- afternoon 14:00~17:00
- Saturday: mornings 10:00~12:00
- Tel: (02)794-7700
- Website www.Severance.or.kr

2) Asan Medical Center (Asian Foundation)

- Weekdays 09:00~17:00
- Saturdays : 09:00~12:00
- Tel: (02)3010-5001~ 2 Fax: 82-2- 3010-5004
- E-mail: int@www.amc.seoul.kr
- Website <http://www.amc.seoul.kr>

3) SunchonHyang Hospital International Clinic

(Soon Chun Hyang University Hospital)

- Between Hannam Village & U.N. Village
- Tel: (02)709-9158, 9114

4) Samsung Medical Center (Vision of the 21st Century)

- Weekdays: 09:00~17:00
- Saturdays: 09:00~12:00
- Tel: (02)3410-0200 / 0226
- Email: ih@smc.samsung.co.kr
- Site www.samsunghospital.com

5) Cha Hospital International Clinic

Focuses primarily on ob-gyn and pediatric care for foreigners, though general medical treatment is also available. Services provided in English and Japanese.
Southern Seoul, Gangnam district

- Tel: (02)3468-3113
- Website www.chamedical.com

Map of Ewha Womans University

EWHA WOMANS UNIVERSITY CAMPUS GUIDE



- 1. Main Gate
- 2. Admission Hall
- 3. Physical Education Building A (Thomas Hall)
- 4. Physical Education Building B (Gibson Hall)
- 5. Physical Education Building C
- 6. Arts & Design Building A
- 7. Arts & Design Building B
- 8. Arts & Design Building C
- 9. Natural History Museum
- 10. English Practice House
- 11. Longview House
- 12. Music Building
- 13. Ewha Centennial Library
- 14. Helen Hall (Nursing Science)
- 15. Wichita House (President's Residence)
- 16. Law Building
- 17. Ewha Archives
- 18. Ah-Ryung-Dong (House Management House)
- 19. Engineering Building (Asan Hall)
- 20. Ewha-Kurman High School
- 21. Education Building A
- 22. Education Building B
- 23. North Gate
- 24. Science Building A
- 25. Science Building B
- 26. Science Building C
- 27. Jinsamkwon
- 28. Ewha-POSCO Building (Social Sciences)
- 29. Humanities Building B
- 30. Humanities Building A
- 31. Student Union
- 32. Pharmaceutical Science Building A (Appenzeller Hall)
- 33. Pharmaceutical Science Building B
- 34. Statue of Dr. Helen Kim
- 35. Pfeiffer Hall (Main Hall)
- 36. Case Hall (Graduate School Building)
- 37. Emerson Chapel

- 38. Clara Hall (Graduate School Building II)
- 39. Welch-Ryang Auditorium
- 40. Back Gate
- 41. Ewha-Kurman Junior High School
- 42. Ewha-Samsung Education Culture Building
- 43. Ewha-Shinsegae Building (Business)
- 44. Ewha-SK Telecom Center
- 45. Human Ecology Building (Morris Hall)/Alumnae Building
- 46. Ewha Kindergarten
- 47. Ewha Elementary School
- 48. Upper Room
- 49. West Gate
- 50. Centennial Museum
- 51. International Education Building
- 52. Ewha Womans University Church
- 53. Ewha Athletics Track
- 54. Graduate Student Dormitory A / B
- 55. Ewha-Samsung International House
- 56. Ewha-ALPS Children's Center
- 57. Ewha Campus Center (Under Construction)

- 58. Community Welfare Center
- 59. Hanwoori Hall (Undergraduate Student Dormitory A / B)
- 60. Tennis Court
- 61. Greenhouse
- 62. North A-Hyun Gate
- 63. Herb Garden
- 64. Ewha Haldang (The Ewha Foundation)